

ONLINE INSTRUCTION SUPPORT

Supporting Higher Education Institutions Prepare for Fall

COVID-19 is forcing fundamental changes to the way institutions of higher education deliver content and services. With online instruction now front and center, network availability and performance are more mission-critical than ever.

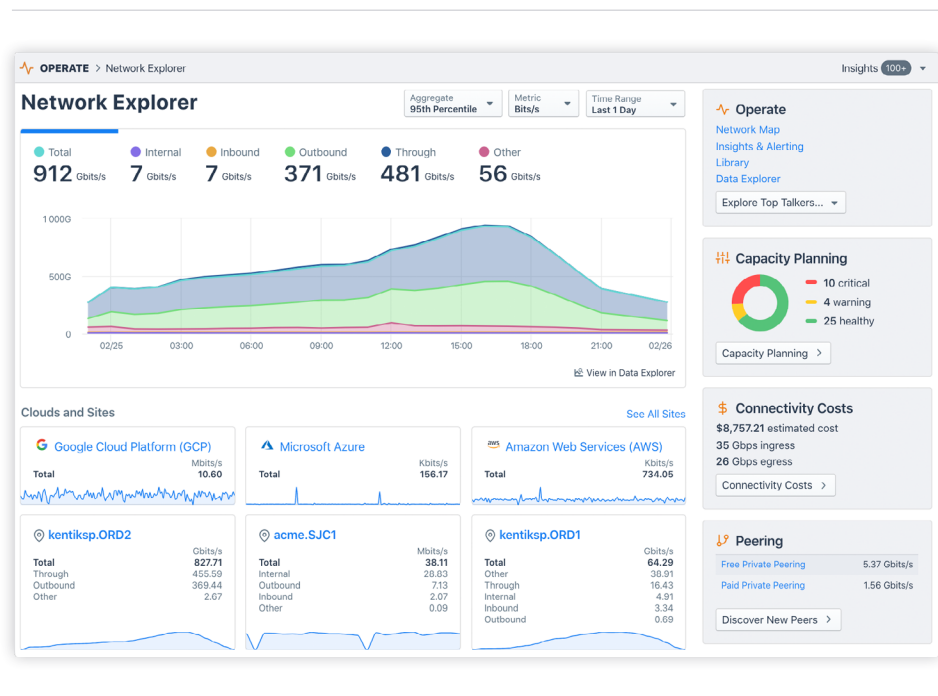
To ensure that online instruction is efficient, effective and a great experience, Kentik — provider of the world’s most powerful network analytics and monitoring platform, and used in educational, service provider, SaaS, gaming, content, and enterprise networks — is offering qualified higher education institutions, those with a .edu email address or an approved REN, complimentary access to our network analytics service, in a limited fashion for three months, with no subscription fees.

Offer Details

This offer is for a complimentary three-month subscription to Kentik’s SaaS offering. Registration for the offer must be completed by August 31, 2020 and complimentary services are limited to three months from the date of signup. A valid .edu email address is required.

The offer includes:

- Flow collection from six physical devices (e.g. routers) at up to 1,000 FPS each
- Flow logs from cloud providers (AWS, GCP, and Azure) at up to 2,000 FPS each
- 30-day data retention



How to Get Started

Registration is easy! Begin by registering at www.kentik.com/go/edu-trial. Provide your contact details, including an email address with a .edu domain or from the domain of an approved REN. We'll send you a confirmation email with instructions on accessing your account and starting your service.

Service and Support

Support services are available from Kentik at support@kentik.com, through the [Kentik User Slack channel](#), and through regular office hours conducted over Zoom. Detailed technical information is also available on the [Kentik Knowledge Base](#).



In addition, Kentik is proud to collaborate with [Internet2](#). Internet2 will provide training and office hours for Kentik onboarding, Kentik usage, and general and remote work-supporting topics in network planning, operations, debugging, and scaling.

Revised 20200803

A network diagram showing a complex web of interconnected nodes and lines, representing a network topology. The nodes are small blue circles, and the lines are thin blue lines connecting them.

ABOUT KENTIK | Kentik® is the network intelligence platform for the connected world, trusted by leading digital enterprises and service providers. With Kentik, businesses eliminate the visibility and intelligence gaps associated with running dynamic and complex networks, and achieve greater network performance, reliability and security. The Kentik Network Intelligence Platform ingests diverse data streams from the internet, edge, cloud, data center and hybrid infrastructures and provides real-time visualizations and AIOps-powered insights and automation. Learn more at www.kentik.com.