



# Grouper at Georgia Tech & PSPNG

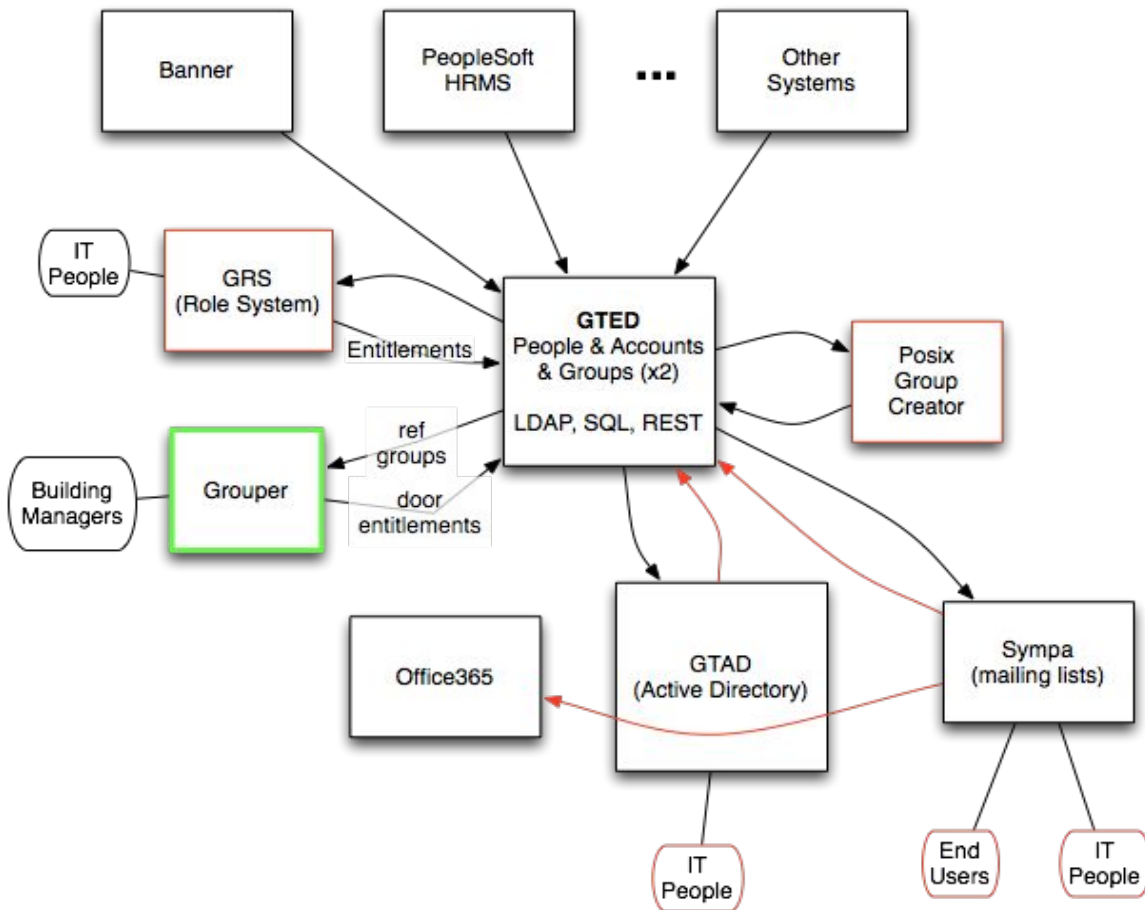
2017 Technology Exchange



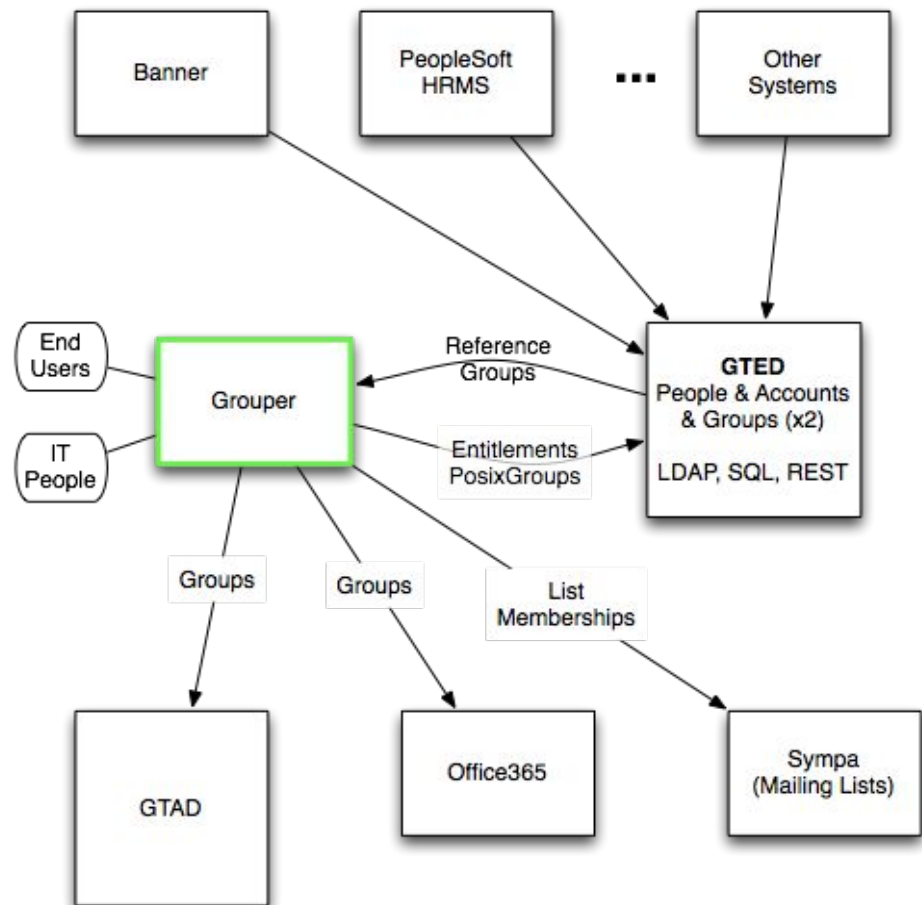
# Mini agenda

- Grouper at Georgia Tech
  - Current
  - “Soon”
  - Eventually
  - Quick Notes
- PSPNG
  - Capabilities
  - Examples
    - LDAP Groups
    - LDAP Attributes
    - Active Directory Groups

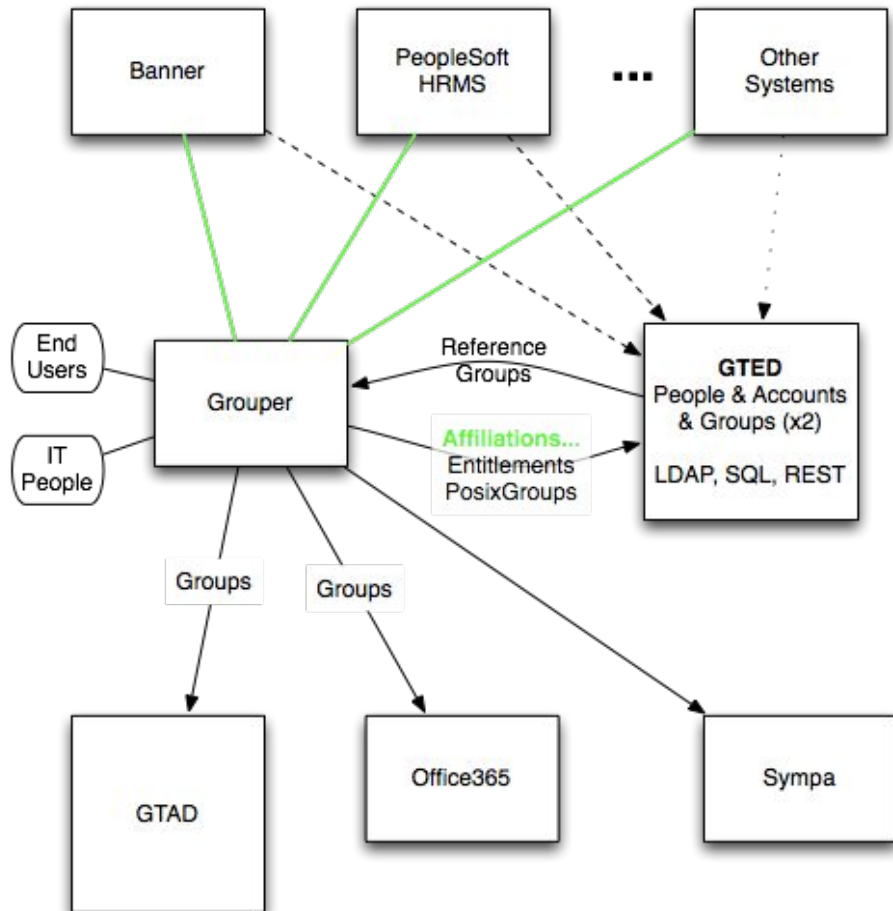
Georgia Tech Groups  
2007-



## Georgia Tech Groups Near Future



## Georgia Tech Groups Vision



# Grouper at GT: Quick Notes

- APIs: Tied into our campus ESB (BuzzApi)
- Extensions:
  - Conditional Memberships
  - Grace periods
  - Subjects: People & Accounts
- Provisioning: PSPNG into LDAP Entitlements

# PSPNG: Capabilities

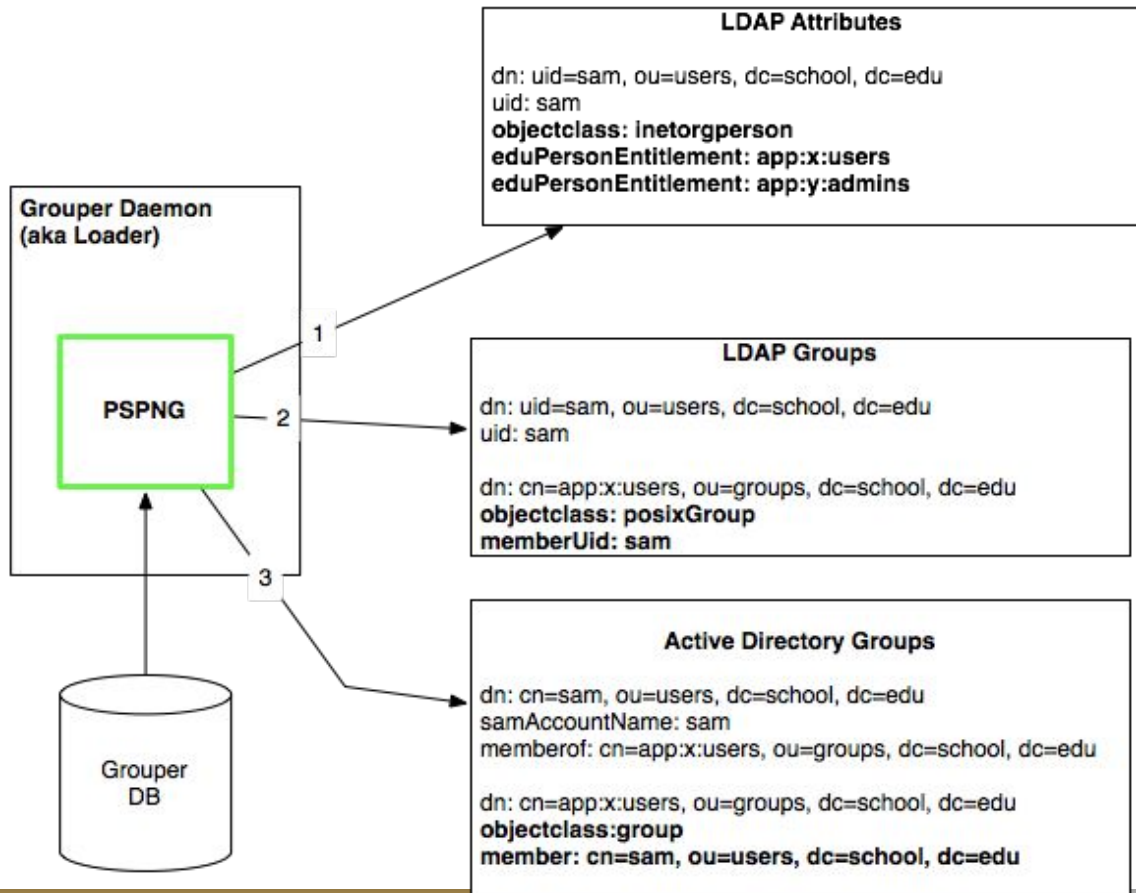
What does PSPNG do?

- Update **LDAP Users or Groups** with group memberships

Features:

- Real-time
- Simple configuration (relatively, of course)
- Selective
- Flexibility in LDAP nuances
- Optimized: queries, caching & updating
- (Shhhh) create users (Very limited)

# Grouper PSPNG LDAP Provisioning





# PSPNG Config Examples - LDAP Groups

Wiki: <https://spaces.internet2.edu/display/Grouper/Grouper+Provisioning%3A+PSPNG>

```
changeLog.consumer.pspng_groups_goun.class = edu.internet2.middleware.grouper.pspng.PspChangelogConsumerShim
changeLog.consumer.pspng_groups_goun.type = edu.internet2.middleware.grouper.pspng.LdapGroupProvisioner
changeLog.consumer.pspng_groups_goun.quartzCron = 0 * * * * ?
changeLog.consumer.pspng_groups_goun.ldapPoolName = demo
changeLog.consumer.pspng_groups_goun.memberAttributeName = uniqueMember
changeLog.consumer.pspng_groups_goun.memberAttributeValueFormat = ${ldapUser.getDn()}
changeLog.consumer.pspng_groups_goun.groupSearchBaseDn = ou=groups,dc=example,dc=edu
changeLog.consumer.pspng_groups_goun.allGroupsSearchFilter = objectclass=groupOfUniqueNames
changeLog.consumer.pspng_groups_goun.singleGroupSearchFilter = (&(objectclass=groupOfUniqueNames)(cn={0})) | ${group.name}
changeLog.consumer.pspng_groups_goun.groupCreationLdifTemplate = dn: ${utils.bushyDn(group.name,"cn", "ou")} | cn:
${group.name} | objectclass: groupOfUniqueNames
changeLog.consumer.pspng_groups_goun.userSearchBaseDn = dc=example,dc=edu
changeLog.consumer.pspng_groups_goun.userSearchFilter = uid={0} | ${subject.id}
changeLog.consumer.pspng_groups_goun.grouperIsAuthoritative = true
changeLog.consumer.pspng_groups_goun.supportsEmptyGroups = false
```

# PSPNG Config Examples - LDAP Attributes

Wiki: <https://spaces.internet2.edu/display/Grouper/Grouper+Provisioning%3A+PSPNG>

```
changeLog.consumer.pspng_epe.class = edu.internet2.middleware.grouper.pspng.PspChangelogConsumerShim
changeLog.consumer.pspng_epe.type = edu.internet2.middleware.grouper.pspng.LdapAttributeProvisioner
changeLog.consumer.pspng_epe.quartzCron = 0/5 * * * * ?
changeLog.consumer.pspng_epe.ldapPoolName = demo
changeLog.consumer.pspng_epe.provisionedAttributeName = eduPersonEntitlement
changeLog.consumer.pspng_epe.provisionedAttributeValueFormat = g:${group.name}
changeLog.consumer.pspng_epe.allProvisionedValuesPrefix=g:
changeLog.consumer.pspng_epe.grouperIsAuthoritative = true
changeLog.consumer.pspng_epe.userSearchBaseDn = dc=example,dc=edu
changeLog.consumer.pspng_epe.userSearchFilter = uid={0} | |${subject.id}
```

# PSPNG Config Example-Active Directory Groups

Wiki: <https://spaces.internet2.edu/display/Grouper/Grouper+Provisioning%3A+PSPNG>

```
changeLog.consumer.pspng_activatedirectory.class = edu.internet2.middleware.grouper.pspng.PspChangelogConsumerShim
changeLog.consumer.pspng_activatedirectory.type = edu.internet2.middleware.grouper.pspng.LdapGroupProvisioner
changeLog.consumer.pspng_activatedirectory.quartzCron = 0 * * * * ?
changeLog.consumer.pspng_activatedirectory.ldapPoolName = active_directory
changeLog.consumer.pspng_activatedirectory.isActiveDirectory = true
changeLog.consumer.pspng_activatedirectory.memberAttributeName = member
changeLog.consumer.pspng_activatedirectory.memberAttributeValueFormat = ${ldapUser.getDn()}
changeLog.consumer.pspng_activatedirectory.groupSearchBaseDn = ou=grouper,ou=groups,dc=example,dc=edu
changeLog.consumer.pspng_activatedirectory.allGroupsSearchFilter = objectclass=group
changeLog.consumer.pspng_activatedirectory.singleGroupSearchFilter = (&(objectclass=group)(cn=${group.name}))
changeLog.consumer.pspng_activatedirectory.groupCreationLdifTemplate = dn: cn=${group.name} | | cn: ${group.name} | | objectclass: group
changeLog.consumer.pspng_activatedirectory.userSearchBaseDn = cn=users,dc=example,dc=edu
changeLog.consumer.pspng_activatedirectory.userSearchFilter = samAccountName=${subject.id}
```