

# US1007-TD

## Introduction

Please, first take a look at the [architecture](#) for integrating AC with COIN.

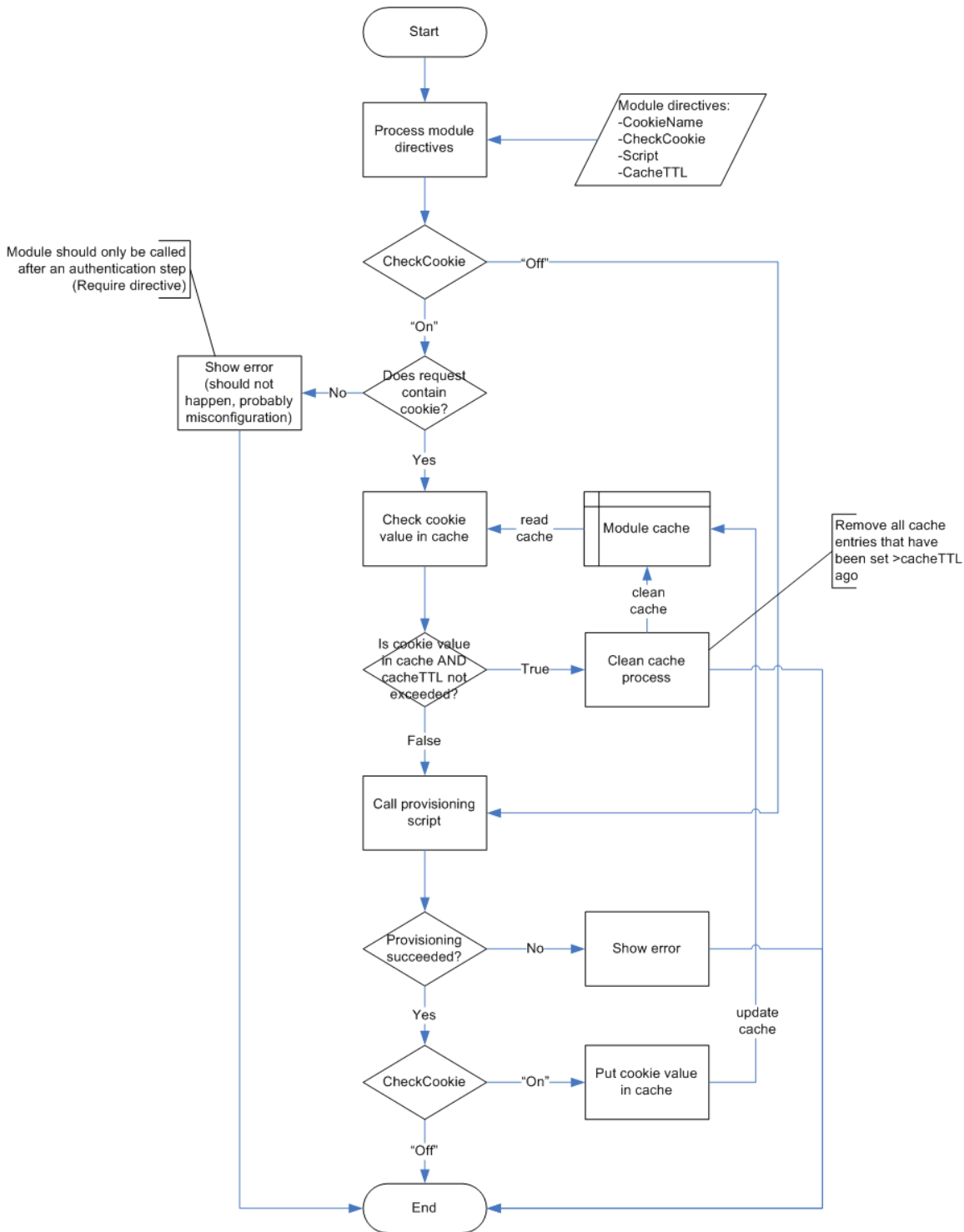
The technical design for provisioning Adobe Connect consists of two parts:

1. Apache module "mod\_prov", configured in the reverse proxy to evaluate if provisioning is necessary
2. Script "prov\_script" to perform actual provisioning to AC

## Apache module

The apache module should be implemented such that it is activated after Shibboleth has performed its authentication and/or session validation. This is done by using the "fixup" hook in Apache.

The following flow chart shows the functionality of the apache module:



## Provisioning Script

The provisioning script is implemented in PHP and it accesses the Adobe Connect webservice API. It logs in as administrator and checks whether the user already exists. If the user does not exist, it creates the account using the attributes (first name, surname, e-mail address) that it received through the SURFfederatie. The password is unused but since it is mandatory it will be set to a random value.

For developers convenience, the script can also be used from the commandline, to manipulate users/groups manually.

## Notes

1. The user identifier is <instellingafkorting>.<uid>; this is passed by espee-test.surfnet.nl as a special attribute called "espeeUid", so Shibboleth can put it in a HTTP header for the Adobe Connect server and put it in an environment variable for the provisioning script.

(having Shibboleth assembling attributes by itself would be difficult to realize)

2. In shibboleth AAP.xml add "espeeUid" as Shib-espeeUid attribute as set by espee-test.surfnet.nl
3. In Adobe Connect the default setting "use e-mail as login" must be turned off, so e-mail addresses and login names can differ (ie. e-mail and espeeUid); do this by setting "use e-mail as login" to No in the Administration interface for "Users and Groups"
4. In C:\breeze\custom.ini change HTTP\_AUTH\_HEADER to shib-espeeuid