



Collaborative Organization Management Platform

COmanage™ is designed to allow collaborative organizations to flourish, using key collaboration tools in a secure and effective framework. The intent is to externalize identity management services, so that authentication and authorization of group members are handled in a single, efficient process that feeds into the various collaborative applications.

What is COmanage?

Imagine individuals working together on a groundbreaking professional collaboration while being based at numerous different universities and research institutes. To facilitate their teamwork, these collaborators need to share documents, set up institution-neutral mailing lists, and use a wiki to capture their work.

What they do not need is to have to set up an authentication infrastructure so these individuals can log in to this neutral location and work together. Their focus needs to be on the collaboration, not the technology.

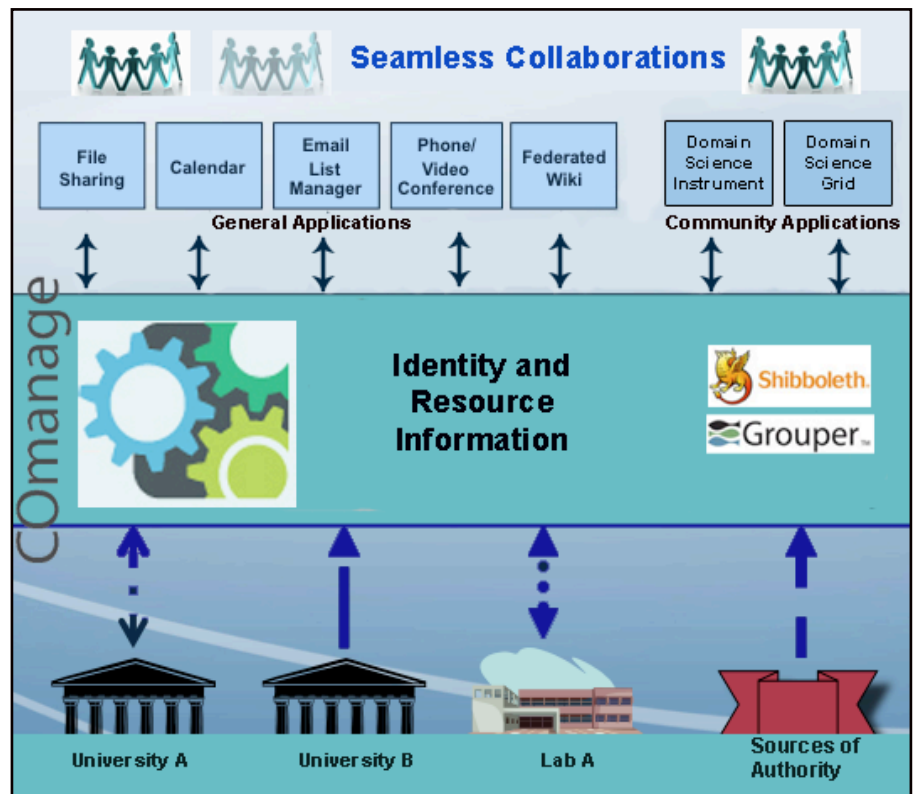
Here is where COmanage comes in. COmanage allows collaborative groups to streamline and manage the identity-oriented requirements of common collaboration tools. With COmanage, the identity management components — the group membership that ties together mailing lists, the authentication, and so on — are all handled behind the scenes. This means that collaborators can focus on what they do best — advancing scholarship and research in their field of expertise.

Collaborations housed within a single institution can also benefit. For example, a working group might want to have a dedicated workspace that provides them a rich toolset without the limitations common in large central services. COmanage can leverage the identity management infrastructure of the institution while providing a local set of collaboration tools to the working group.

Getting Involved

You are invited to become involved in testing and providing feedback, thereby helping to guide the COmanage framework's future development. For more information and for instructions on evaluating a demonstration version of COmanage, visit <http://middleware.internet2.edu/co>.

See the reverse side of this page to learn about the planned COmanage roadmap.



CManage Roadmap *(subject to change)*

Note that each version builds upon the previous versions and will allow for all listed applications.

CManage version Alpha (April 2009)

Expected User Experience

In the Alpha release, CManage can be configured to work with one federation (InCommon, intra-campus, or your own). You will be able to invite people to join your collaborative organization (CO) who are from sites that belong to the one federation; those people will be able to use the domesticated* applications within your CManage instance.

The installation process will be minimalistic — there will be a virtual machine image available. There will also be documentation on how to create, configure and manage a CManage instance from “scratch.” In addition, a demo will be provided in the Amazon Elastic Compute Cloud (EC2) or Internet2 space for people to explore CManage — its model, features, and functionality — without having to install their own CManage instance.

Core Product

- Shibboleth SP (limited to one federation only)
- Grouper/LDAPPC
- OpenLDAP
- MySQL
- Collaboration Administration (Collabmin) interface

Included Applications*

- Sympa
- Drupal
- Confluence

Other features: Debian Repository

CManage version Beta (due Dec. 2009)

Expected User Experience

The user experience in this version will be very similar to the Alpha. People downloading the virtual appliance will see new domesticated applications and be able to link to additional federations. For collaborators needing tighter ties with a parent institution, there will be an installation script to help them configure the CManage instance to interact with external middleware infrastructure, such as

the Directory infrastructure from that parent institution. The collaboration administration (Collabmin) interface will be redesigned to include tabs for each application to standardize how people can administer the different apps. An online demo playground will remain available to users only interested in exploring CManage.

Core Product Expansion

- Shibboleth (complete)
- Collabmin redesign (tabs)
- Start of a broader installation script to allow more flexibility in identity infrastructure

Additional Included Applications*

- Jira, Bedework and Zimbra

Other features: Focus on user interface & installer script

CManage v. 1.0 (due Apr. 2010)

Expected User Experience

The focus for this version of CManage is on the visual experience for the Collabmin. The interface will change to match the Fluid model (www.fluidproject.org). Additional domesticated applications will be added to the service. This will be considered the first complete version of CManage.

The CManage development team hopes to work with application developers to ensure their products meet the requirements for domestication.

Additional Included Applications*

- phpBB (Forum) and IM (Jabber)

Other features: Fluid-ized interface & RedHat/CentOS version

CManage v. 2.0 and beyond

- Video hosting
- Presentation applications
- Open office-type tools
- Links to social network sites or software

* “Domesticated” applications are those that externalize identity information, handling it in a way that facilitates sharing by multiple applications. The list of domesticated applications may change over time.